

# Increased Osteogenic Potential of Pre-Osteoblasts on Three-Dimensional Printed Scaffolds Compared to Porous Scaffolds for Bone Regeneration

Yasaman Zamani<sup>1,2</sup>, Ghassem Amoabediny<sup>2,3,4</sup>, Javad Mohammadi<sup>1\*</sup>, Behrouz Zandieh-Doulabi<sup>5</sup>, Jenneke Klein-Nulend<sup>5</sup> and Marco N. Helder<sup>4</sup>

<sup>1</sup>Department of Biomedical Engineering, Faculty of New Sciences and Technologies, University of Tehran, Tehran, Iran;

<sup>2</sup>Department of Biomedical Engineering, Research Center for New Technologies in Life Science Engineering, University of Tehran, Tehran, Iran; <sup>3</sup>School of Chemical Engineering, College of Engineering, University of Tehran, Tehran, Iran;

<sup>4</sup>Department of Oral and Maxillofacial Surgery/Oral Pathology, Amsterdam University Medical Centers-location VUmc and Academic Centre for Dentistry Amsterdam (ACTA), Amsterdam Movement Sciences, Amsterdam, the Netherlands;

<sup>5</sup>Department of Oral Cell Biology, Academic Centre for Dentistry Amsterdam (ACTA)-University of Amsterdam and Vrije Universiteit Amsterdam, Amsterdam Movement Sciences, Amsterdam, the Netherlands

Received 11 April 2020; accepted 12 Aug 2020; published online 13 January 2021

## ABSTRACT

**Background:** One of the main challenges with conventional scaffold fabrication methods is the inability to control scaffold architecture. Recently, scaffolds with controlled shape and architecture have been fabricated using 3D-printing. Herein, we aimed to determine whether the much tighter control of microstructure of 3DP PLGA/ $\beta$ -TCP scaffolds is more effective in promoting osteogenesis than porous scaffolds produced by solvent casting/porogen leaching. **Methods:** Physical and mechanical properties of porous and 3DP scaffolds were studied. The response of pre-osteoblasts to the scaffolds was analyzed after 14 days. **Results:** The 3DP scaffolds had a smoother surface ( $R_a$ :  $22 \pm 3 \mu\text{m}$ ) relative to the highly rough surface of porous scaffolds ( $R_a$ :  $110 \pm 15 \mu\text{m}$ ). Water contact angle was  $112 \pm 4^\circ$  on porous and  $76 \pm 6^\circ$  on 3DP scaffolds. Porous and 3DP scaffolds had the pore size of  $408 \pm 90$  and  $315 \pm 17 \mu\text{m}$  and porosity of  $85 \pm 5\%$  and  $39 \pm 7\%$ , respectively. Compressive strength of 3DP scaffolds ( $4.0 \pm 0.3 \text{ MPa}$ ) was higher than porous scaffolds ( $1.7 \pm 0.2 \text{ MPa}$ ). Collagenous matrix deposition was similar on both scaffolds. Cells proliferated from day 1 to day 14 by fourfold in porous and by 3.8-fold in 3DP scaffolds. ALP activity was 21-fold higher in 3DP scaffolds than porous scaffolds. **Conclusion:** The 3DP scaffolds show enhanced mechanical properties and ALP activity compared to porous scaffolds *in vitro*, suggesting that 3DP PLGA/ $\beta$ -TCP scaffolds are possibly more favorable for bone formation. **DOI: 10.29252/ibj.25.2.78**

**Keywords:** Alkaline phosphatase,  $\beta$ -tricalcium phosphate, Poly(lactic-co-glycolic) acid copolymer

**Corresponding Author:** Javad Mohammadi

Department of Biomedical Engineering, Faculty of New Sciences and Technologies, University of Tehran, North Kargar Street, 1439957131, Tehran, Iran; Tel: (+98-21) 86093182; E-mail: javad.mohammadi@ut.ac.ir

## INTRODUCTION

Bone is a tissue with self-repairing capacity; however, critical size bone defects (larger than 1 cm) usually cannot be regenerated by the inherent bone healing capacity. Treatment of such bone

defects by autografts and allografts possesses several drawbacks, including inadequate availability, possibility of damage to the bone harvest site, and rejection<sup>[1]</sup>. Bone tissue engineering is a developing field aiming to tackle the problems with the current treatments of bone diseases.

### List of Abbreviations:

**3DP**, three-dimensional printing; **ALP**, alkaline phosphatase; **BCIP**, 5-bromo-4-chloro-3-indolyl phosphate; **NBT**, nitro blue tetrazolium chloride; **PLGA**, poly(lactic-co-glycolic) acid; **SEM**, scanning electron microscopy;  **$\beta$ -TCP**,  $\beta$ -tricalcium phosphate

Bioresorbable scaffolds are a key component in current bone tissue engineering approaches and provide a temporary mechanical and structural osteoconductive support. Polymers such as poly( $\epsilon$ -caprolactone), polylactic acid, and PLGA, belonging to poly( $\alpha$ -hydroxy esters) family, are FDA approved biodegradable materials broadly utilized to construct scaffolds for bone regeneration<sup>[2]</sup>. These polymers have adjustable degradation rates with degradation products that can be removed by natural pathways in the body<sup>[2,3]</sup>. However, poly( $\alpha$ -hydroxy esters) lack osteoconductivity and cell recognition sites<sup>[2,4]</sup>. Therefore, these polymers are often used as composites with osteoconductive materials, including biphasic calcium phosphate and  $\beta$ -TCP<sup>[5-8]</sup>.

The 3D porous scaffolds fabricated by traditional approaches aim to mimic the structure of cancellous bone<sup>[9]</sup>. However, control over the internal structure with high accuracy is difficult<sup>[10]</sup>. Moreover, creating patient-specific scaffolds with shapes fitting the defect geometry is virtually impossible. To address these issues, 3D printing technology is currently extensively being used<sup>[11]</sup>. In this technology, the shape of the defect site is first identified using computed tomography or magnetic resonance imaging. Geometrical modelling is then conducted to generate a 3D computer-aided design model. The 3D scaffold is eventually printed layer-by-layer according to the designed model<sup>[12]</sup>.

The current study attempted to determine whether the much tighter control of shape and nano/microstructure of 3DP PLGA/ $\beta$ -TCP scaffolds is more effective in promoting osteogenesis than the 3D porous scaffolds produced by solvent casting/porogen leaching method, using the same components. This concept was evaluated by the detailed characterizations of scaffold properties (i.e. surface morphology and hydrophilicity,  $\beta$ -TCP particle dispersion, pore size, porosity, and compressive strength), as well as by the multi-parameter assessment of MC3T3-E1 pre-osteoblasts responses. These findings could provide solid insights in which the type of scaffold is preferred for future use in engineered bone applications.

## MATERIALS AND METHODS

### Porous scaffold fabrication by solvent casting/porogen leaching

Scaffolds were fabricated using a previously described method<sup>[13]</sup> with slight modifications. Briefly, sugar crystals (300-500  $\mu$ m) were used as the porogen. A 10-mm diameter cylindrical glass mold filled with the sugar crystals was placed in a humidified sealed container for 16 h to partly fuse the crystals. PLGA

(75/25, Purac Biomaterials, the Netherlands) was dissolved in DMSO (12.5% [w/w]; MP Biomedicals, France) and thoroughly mixed with  $\beta$ -TCP powder (NikCeram Razi, Isfahan, Iran) in a 2:1 (w/w) ratio. This PLGA/ $\beta$ -TCP mixture was then added dropwise to the sugar mold, allowing diffusion throughout the fused sugar crystals and transferred to -20 °C for 2 h to set the scaffold. The sugar crystals were subsequently leached out of the precipitated PLGA/ $\beta$ -TCP mixture in deionized water at room temperature for three days (three refreshments per day). All scaffolds were sterilized by UV for 30 min, followed by 1-h immersion in 70% ethanol. Scaffolds fabricated by this method are referred to as "porous" scaffolds.

### 3DP scaffold fabrication

PLGA granules were melted at 150 °C.  $\beta$ -TCP powder was subsequently mixed with the molten PLGA in a 2:1 ratio. The PLGA/ $\beta$ -TCP mixture was transferred to the heating tank of the 3D-bioprinter (RegenHU, Villaz-St-Pierre, Switzerland), and scaffolds were printed layer-by-layer at 125 °C and 29 revs/min. The inner diameter of the extruding needle was 300  $\mu$ m. Cylindrical scaffolds with a diameter of 10 mm and height of 6 mm (total volume 0.471 cm<sup>3</sup>) were produced.

### Characterization of scaffolds

SEM (Zeiss EVO LS-15, Oberkochen, Germany) was used to study the surface morphology and dispersion of  $\beta$ -TCP particles, as well as the pore size of porous and 3DP scaffolds. Scaffolds were gold-coated (Edwards, Burgess Hill, UK) prior to imaging. The accelerating voltage of 10 kV was used for imaging. Pore size measurements (n = 5 per scaffold) were conducted randomly from SEM images. Surface hydrophilicity was evaluated by placing a drop of water on the surface of porous and 3DP scaffolds and by measuring the angle of water drop using a USB digital microscope (Veho, Hampshire, UK). Surface roughness was determined using a surface profilometer (Fanavari Kahroba Co., Tehran, Iran). For porosity measurement, scaffolds were immersed in ethanol under vacuum<sup>[14]</sup>. After 20 min, scaffolds were removed from ethanol, and the porosity was calculated using the following equation:

$$p = \frac{(V_1 - V_3)}{(V_2 - V_3)}$$

where  $p$  is scaffolds porosity,  $V_1$  is the initial volume of ethanol,  $V_2$  is the volume of ethanol containing the scaffold, and  $V_3$  is the volume of the remaining ethanol after scaffold removal.

An Instron 6022 universal testing machine (Instron Limited, High Wycombe, UK) with a load cell of 1 kN

was used to determine the compressive strength of the scaffolds, which were then compressed at a rate of 1 mm/min. Values of load  $F$  (N) and time (s) were recorded during the test. The stress-strain curves were plotted, and compressive strength was calculated by 1% offset of the linear region.

### Cell culture studies

MC3T3-E1 pre-osteoblasts (ATCC, Manassas, VA, USA) were cultured in  $\alpha$ -MEM (Life Technologies, Waltham, MA) containing 10% fetal bovine serum (BioWest SAS, Nuaille, France) and 1% penicillin-streptomycin-fungizone (Sigma-Aldrich®, St. Louis, MO, USA) in an incubator at 37 °C. Upon reaching desired confluency, cells were detached using 0.25% trypsin (Invitrogen, Waltham, MA, USA) and 0.1% EDTA (Merck, Darmstadt, Germany), re-suspended in osteogenic medium ( $\alpha$ -MEM with 10% fetal bovine serum, 1% penicillin-streptomycin-fungizone, 50  $\mu$ g/ml ascorbic acid, and 10 mM  $\beta$ -glycerophosphate) and seeded onto the porous and 3DP PLGA/ $\beta$ -TCP scaffolds at  $5 \times 10^5$  cells/cm<sup>3</sup>. Cell-seeded scaffolds were incubated at 37 °C up to 14 days. At day 14, scaffolds were removed from culture and cut into four equal parts. The parts were used to assess the cell morphology (part 1 construct), cell dispersion (part 2 construct), collagenous matrix deposition (part 3 construct), and ALP activity (part 4 construct), as described below.

### Cell seeding efficiency

Cell seeding efficiency was measured 16 h after seeding the cells onto the scaffolds. Cell-containing scaffolds were transferred to a fresh plate and washed twice with PBS. AlamarBlue® solution (Invitrogen, Frederick, MD) was added to the scaffolds and incubated at 37 °C for 4 h. The solution was then collected from the scaffolds, and fluorescence was measured at 530 nm using a Synergy HT® spectrophotometer (BioTek Instruments Inc., Winooski, VT, USA). The number of cells attached to the scaffold ( $N_s$ ) was determined using a standard curve. The number of cells attached to the old plate ( $N_p$ ) was also determined following the same procedure. Seeding efficiency was calculated using the following equation<sup>[15]</sup>:

$$\text{Seeding efficiency} = \frac{N_s}{N_s + N_p} \times 100$$

After performing the seeding efficiency test, scaffolds were returned to the incubator. Scaffolds were assayed in triplicate.

### Cell proliferation

At days 3, 7, and 14 of cell culture in the scaffolds, cell-containing scaffolds were removed from culture, and the number of cells attached to the scaffolds was determined using AlamarBlue® assay. Cell proliferation was reported as the number of cells attached to the scaffolds at each time point divided by the number of cells attached to the scaffolds at day one. Three replicates were used for each scaffold type.

### Cell morphology and dispersion

The morphology of the cells on porous and 3DP scaffolds was studied using SEM. At day 14, scaffolds were cut into four equal parts, and the first part was used for cell morphology analysis. Part 1 of the cell-containing scaffolds was fixed in glutaraldehyde (4% v/v), followed by dehydration in a series of ethanol solutions with increasing concentrations (50, 70, 80, 90, and 100%). After drying, the fixed samples were gold-coated and observed using a scanning electron microscope. To determine cell dispersion in porous and 3DP scaffolds, another part (part 2) of the cell-containing scaffolds was washed in PBS and fixed using formaldehyde (4% v/v). Cells in the fixed samples were fluorescently stained by using DAPI and visualized by an inverted microscope (Leica Microsystems, Wetzlar, Germany).

### Collagenous matrix deposition by cells

In order to assess total collagen deposition by the pre-osteoblasts in the scaffolds, staining with picosirius red (Chondrex Inc., Redmond, WA, USA) was performed. Part 3 of the cell-containing scaffolds were washed with PBS and fixed using formaldehyde (4% v/v). The fixed samples were stained with picosirius red for 2 h. Samples were washed in acidified water (0.5% aqueous acetic acid) and imaged with a stereo microscope (Nikon, Tokyo, Japan). To quantify collagen deposition, the dye was extracted from the samples by immersion in 0.2 M NaOH/methanol (1:1, v/v) solution for 30 min. The absorbance of the extracted solution was read at 490 nm with a microplate reader (BioRad Laboratories Inc., Veenendaal, the Netherlands)<sup>[16]</sup>. Measurements were normalized to the weight of the dried samples. We were unable to count the cells in the cell-scaffold construct (part 3) prior to staining to normalize collagen deposition to the cell numbers since lysing the cells for counting would have interfered with picosirius red staining.

### ALP activity and total protein measurement

As an indication of the osteogenic activity of the cells in porous and 3DP scaffolds, part 4 of the cell-containing scaffolds was used for ALP activity

measurement. Samples were separately placed in falcon tubes, and CyQuant® lysis buffer (Invitrogen, Carlsbad, CA, USA) was added to the samples to lyse the cells. Samples were frozen, and three cycles of freeze-thawing was performed. ALP activity was determined using P-Nitrophenylphosphate (Merck) at pH 10.3 as the substrate<sup>[17]</sup>, and absorbance was read at 410 nm. To determine the total cellular protein, a BCA Protein Assay Kit (Pierce™, Rockford, IL, USA) was used according to the manufacturer's instructions. ALP activity was normalized to total protein and reported as nmol/μg cellular protein. For ALP activity staining, nitro blue tetrazolium/5-bromo-4-chloro-3-indolyl phosphate (Roche, Germany) was applied as per protocols provided by the manufacturer.

### Statistical analysis

Data were reported as mean ± SD (n = 3) and compared using unpaired two-tailed t-test (GraphPad Software, La Jolla, CA, USA). A value of  $p < 0.05$  was considered statistically significant.

## RESULTS

### Characterization of porous and 3DP PLGA/β-TCP scaffolds

The porous scaffolds had a pore size of  $408 \pm 90$  (mean ± SD) μm and a porosity of  $85 \pm 5\%$ . The pore size of 3DP scaffolds was  $315 \pm 17$  μm, and its porosity was  $39 \pm 7\%$  (Fig. 1A). The distribution of β-TCP particles on the surface was more homogeneous for the 3DP scaffolds in comparison to the porous scaffolds (Fig. 1B). β-TCP aggregates were visible only on the porous scaffolds surface (Fig. 1B). The 3DP scaffolds had smoother ( $R_a$ :  $22 \pm 3$  μm, mean ± SD) and more regular surface compared with the highly rough surface of the porous scaffolds ( $R_a$ :  $110 \pm 15$  μm), which had an irregular structure ( $p = 0.0004$ , n = 3; Fig. 2A). The 3DP scaffolds had a more hydrophilic surface (water contact angle:  $76 \pm 6^\circ$ ) relative to the porous scaffolds (water contact angle:  $112 \pm 4^\circ$ ;  $p = 0.0009$ , n = 3; Fig. 2B). Compressive strength of the 3DP scaffolds ( $4.0 \pm 0.3$  MPa) was higher ( $p = 0.0006$ , n = 3) than the porous scaffolds ( $1.7 \pm 0.2$  MPa; Fig. 2C).

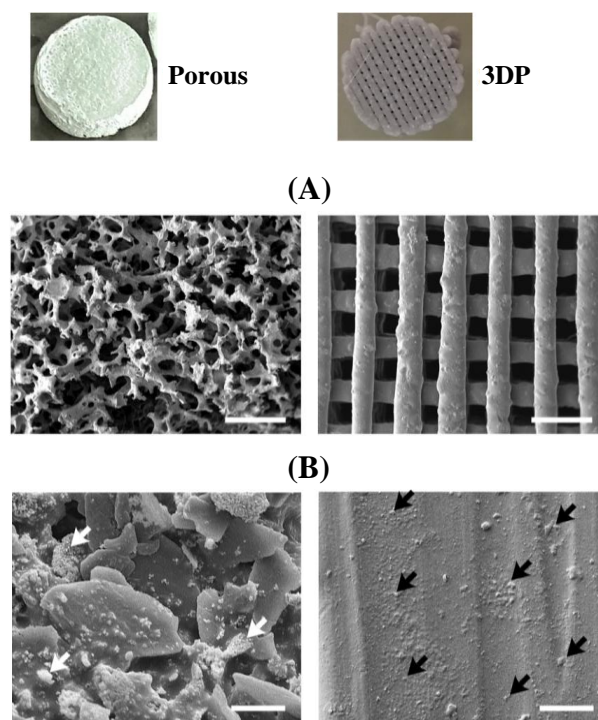
### Cell morphology and dispersion on porous and 3DP PLGA/β-TCP scaffolds

Cells dispersed on the surface of the porous scaffolds had less spread morphology than that of the 3DP scaffolds (Fig. 3A). A dense cellular network was

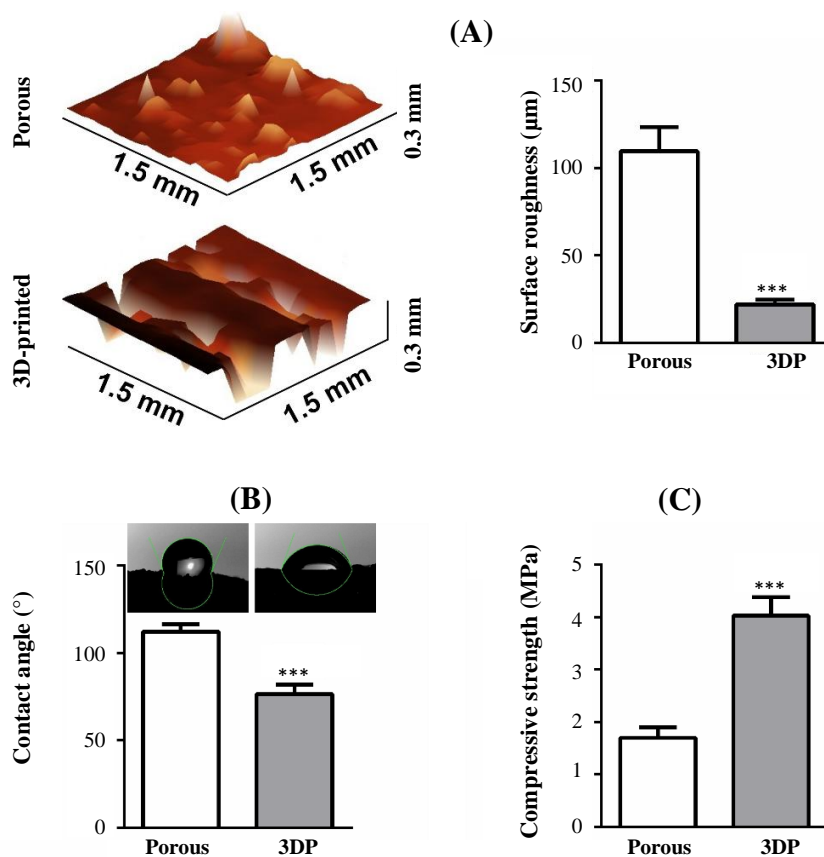
formed on and between the struts of the 3DP scaffolds, and cellular bridging between adjacent struts was observed (Fig. 3A). MC3T3-E1 pre-osteoblasts dispersion on porous and 3DP scaffolds was visualized by DAPI staining after 14 days of culture (Fig. 3B). Slightly higher cell coverage was observed on the 3DP scaffolds compared with the porous scaffolds.

### Cell seeding efficiency and proliferation on porous and 3DP PLGA/β-TCP scaffolds

Cell seeding efficiency on the two scaffold types was measured 16 h after cell seeding onto the scaffolds. Seeding efficiency was  $62 \pm 3\%$  (mean ± SD) for the porous and  $65 \pm 2\%$  for the 3DP scaffolds. Difference in seeding efficiency was not statistically significant ( $p = 0.2230$ , n = 3). Cell proliferation on porous and 3DP scaffolds was analyzed at days 3, 7, and 14 relative to day 1 (Fig. 3C). Cells proliferated on the porous scaffolds by 2.1, 2.7, and 4.0-fold after 3, 7, and 14 days of culture, respectively. Cells proliferated on the 3DP scaffolds by 1.7, 2.3, and 3.8-fold after 3, 7, and 14 days of culture, respectively. The differences in cell proliferation between the two scaffold types was statistically insignificant ( $p = 0.0234$ , n = 3).



**Fig. 1.** SEM images of porous and 3DP PLGA/β-TCP scaffolds. (A) Surface morphology of the scaffolds; (B) distribution of β-TCP particles on the surface of scaffolds. White arrows, β-TCP aggregates on the porous scaffold; black arrows, β-TCP particles on the 3DP scaffold. Scale bar, 10 μm.



**Fig. 2.** Physical properties of porous and 3DP PLGA/β-TCP scaffolds. (A) Surface roughness, (B) water contact angle, and (C) compressive strength of the scaffolds. Data are mean  $\pm$  SD ( $n = 3$ ). \*\*\*Significantly different from porous scaffolds,  $p < 0.001$ .

### Collagenous matrix deposition by cells on porous and 3DP PLGA/β-TCP scaffolds

Collagen deposition by the cells on the two scaffold types was assessed using picosirius red staining. At day 0 (prior to cell seeding), scaffolds stained with picosirius red did not display any red color (Fig. 4A). At day 14, collagen deposition stained in red was noticed in both the top view and the side view of porous and 3DP scaffolds (Fig. 4A). Collagen deposition was not significantly different ( $p = 0.0817$ ,  $n = 3$ ) between the two scaffolds (Fig. 4B).

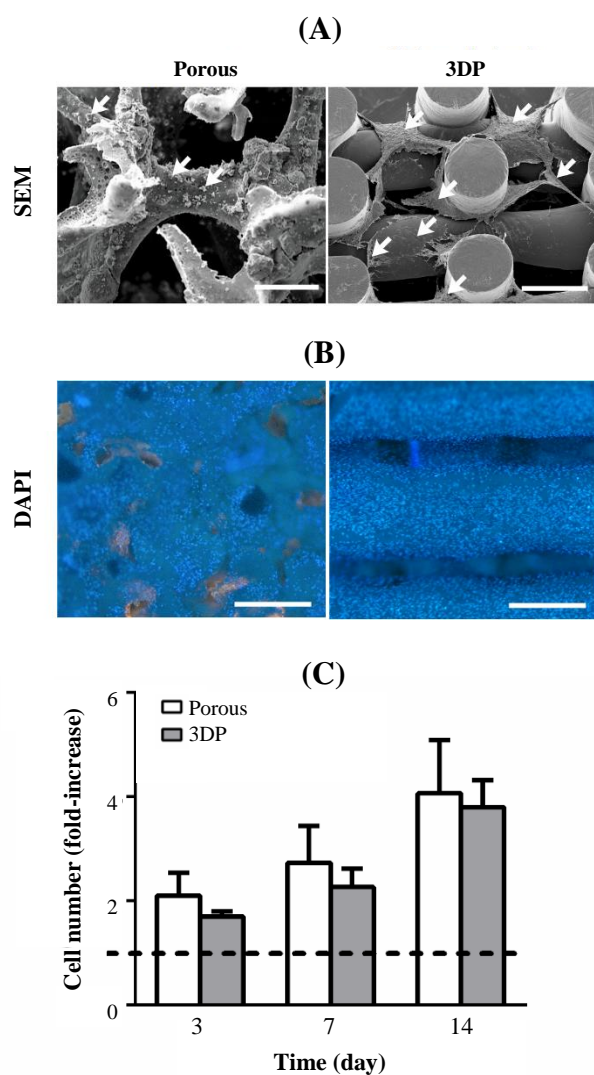
### ALP activity by cells on porous and 3DP PLGA/β-TCP scaffolds

ALP activity by the cells on the two scaffold types was visualized and measured after 14 days of culture. Cells were stained for ALP activity using NBT/BCIP. At day 0 (prior to cell seeding), scaffolds stained with NBT/BCIP did not display any purple color (Fig. 5A). After 14 days of culture, ALP activity (purple) was observed in the top view and the side view of the 3DP scaffolds. Scarce ALP activity was observed on the porous scaffolds (Fig. 5A). ALP activity was also quantitatively measured and was significantly higher

by 21-fold ( $p = 0.0002$ ,  $n = 3$ ) on the 3DP scaffolds compared with the porous scaffolds (Fig. 5B).

## DISCUSSION

It is generally accepted that 3D structure and internal architecture of bone tissue engineering scaffolds play pivotal roles in the successful functioning of the scaffold. Parameters such as scaffold pore size, porosity, and 3D structure greatly influence the formation of new tissue<sup>[18,19]</sup>. In this study, we assessed the scaffold characteristics and the response of MC3T3-E1 pre-osteoblasts on porous versus 3DP PLGA/β-TCP scaffolds. We found that in comparison to the porous scaffolds: (i) the 3DP scaffolds had a relatively smoother surface with a more regular structure; (ii) the dispersion of β-TCP particles was more homogeneous on the surface of the 3DP scaffolds; (iii) the surface of the 3DP scaffolds was more hydrophilic; (iv) compressive strength of the 3DP scaffolds was significantly higher; (v) a more dense cellular network was formed on and between the struts of the 3DP scaffolds; (vi) seeding efficiency and cell



**Fig. 3.** Interaction of MC3T3-E1 pre-osteoblasts with porous and 3DP PLGA/ $\beta$ -TCP scaffolds. (A) Morphology, (B) dispersion, and (C) proliferation of the cells on scaffolds. Scale bar, 500  $\mu$ m. Data are mean  $\pm$  SD (n = 3).

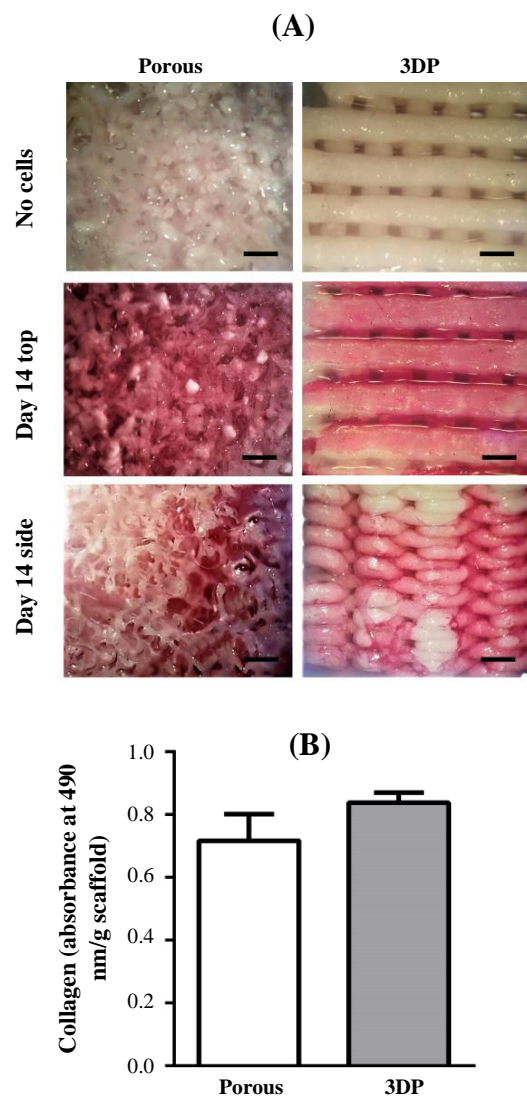
proliferation were similar; (vii) cells deposited comparable amounts of collagenous matrix; (viii) ALP activity was significantly higher on the 3DP scaffolds.

In this study, porous and 3DP scaffolds were fabricated from the same PLGA/ $\beta$ -TCP material. Therefore, the main parameters potentially influencing cellular responses were the architecture, physical and mechanical characteristics of the scaffolds. Internal architecture of scaffolds is identified by several interdependent parameters such as pore size, porosity, and strut diameter so that it proved difficult to attribute a particular cellular response to a certain parameter. For instance, it has been shown that cells can sense and respond to structural parameters such as the orientation of scaffolds struts, fibers, and pores<sup>[20-22]</sup>. In our study,

the porous scaffolds had a random internal orientation, whereas the struts of the 3DP scaffolds had regular parallel orientation in each layer. Therefore, cells attached to the struts of the 3DP scaffolds were provided with a relatively regular surface without deep hills and valleys allowing them to stretch and form cellular networks, while the highly random internal orientation and topography of the porous scaffolds prevented the cells from forming such dense cellular networks (Fig. 3A).

Scaffold surface roughness is another important physical factor influencing cellular functions, especially osteogenesis<sup>[23,24]</sup>. This feature may occur through topography-induced modulation of the cell mechanotransduction<sup>[25]</sup>. Highly rough surfaces (high  $R_a$  values) as well as smooth surfaces (low  $R_a$  values) are not desirable for cellular functioning<sup>[26,27]</sup>. For example, surfaces with micrometer-sized roughness may prevent cells to effectively interact with other cells as it is difficult to cross over the surface irregularities<sup>[28]</sup>. Moreover, on more hydrophilic surfaces, cells generally show good proliferation and differentiation, which has also been indicated for the currently used pre-osteoblastic cell line MC3T3-E1 by Wei *et al.*<sup>[29]</sup>, whose findings appear to be confirmed by our results. From the ALP activity data, we can deduce that the  $R_a$  value of the porous scaffolds was too high to optimally promote ALP activity as an osteogenic marker, though the slightly rough surface of the 3DP PLGA/ $\beta$ -TCP scaffolds facilitated osteoblast maturation potential of the MC3T3-E1 pre-osteoblasts upon the application of osteogenic media. We also concluded that the 3DP PLGA/ $\beta$ -TCP scaffolds having a hydrophilic surface with slight roughness resulted from  $\beta$ -TCP particles might be favorable for pre-osteoblast osteogenic activity.

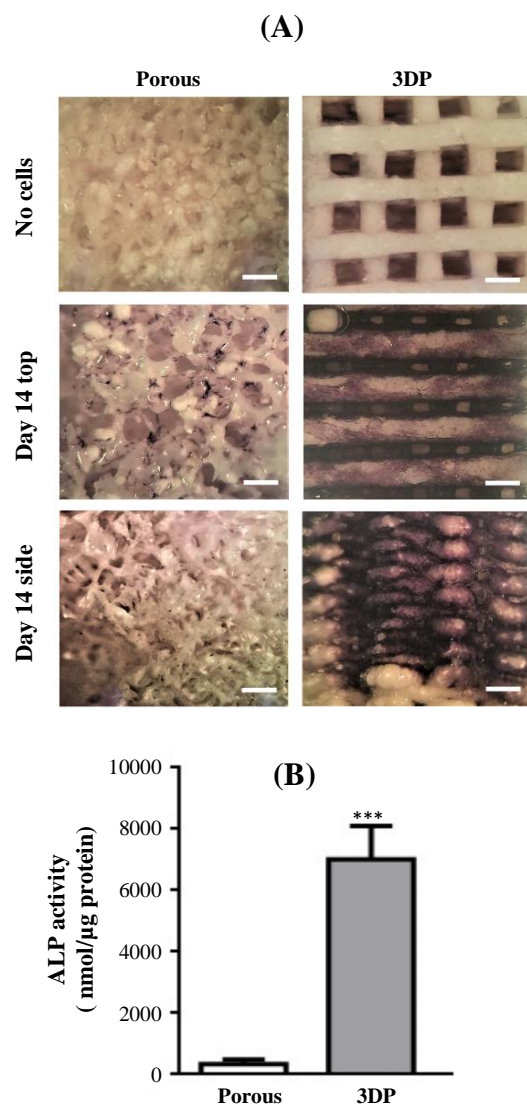
Another pivotal aspect of the scaffolds is their pore structure. There are conflicting reports in the literature on the impact of porosity and pore size on cellular responses. In one research, it has been displayed that apatite/collagen composite scaffolds containing pores with dimensions of 50-300  $\mu$ m and porosities of 49-79% result in insignificant difference in MC3T3-E1 pre-osteoblast proliferation<sup>[30]</sup>. In another study, it has been described that mesenchymal stem cells seeded on hydroxyapatite scaffolds in dynamic culture have higher proliferation in scaffolds with 500  $\mu$ m pores than those of 200- $\mu$ m pores but have higher osteogenic differentiation in the 200  $\mu$ m pore scaffolds<sup>[31]</sup>. The effect of the porosity of  $\beta$ -TCP scaffolds on osteogenic differentiation of mesenchymal stem cells was investigated in another study<sup>[32]</sup>. It has been evidenced that porosity does not influence the osteogenic differentiation of mesenchymal stem cells *in vitro*,



**Fig. 4.** Collagen deposition by MC3T3-E1 pre-osteoblasts on porous and 3DP scaffolds at 14 days of culture. (A) Collagen-stained scaffolds; (B) quantification of collagen deposition. Scale bar, 500  $\mu\text{m}$ . Data are mean  $\pm$  SD (n = 3).

while scaffolds with porosity of 65% result in higher ALP activity *in vivo* compared with 25% and 75% porosity scaffolds<sup>[32]</sup>. In our study, the porous scaffolds had the pore sizes of  $\sim 400 \mu\text{m}$  and a porosity of 85%, while the 3DP scaffolds had pore sizes of  $\sim 315 \mu\text{m}$  and a porosity of 39%. MC3T3-E1 pre-osteoblasts proliferation was similar on porous and 3DP scaffolds, while significantly higher ALP activity was obtained on the 3DP scaffolds compared to the porous scaffolds. Our results are in agreement with the aforementioned data in the literature, showing that the higher pore size and porosity do not necessarily lead to higher ALP activity.

Calcium phosphates, including  $\beta$ -TCP and hydroxyapatite, are well known for their osteoconductive properties<sup>[33]</sup>. Some reports have also claimed osteoinductivity for these materials<sup>[34,35]</sup>. In this study, the distribution of  $\beta$ -TCP particles on the surface of the scaffolds is likely to influence the ALP activity of the pre-osteoblasts.  $\beta$ -TCP particles were more homogeneously dispersed on the 3DP scaffolds surface than that of the porous scaffolds. Moreover, aggregations of  $\beta$ -TCP were visible on the porous scaffolds surface, which is unfavorable for homogeneous osteogenesis by pre-osteoblasts. The inhomogeneous dispersion of  $\beta$ -TCP particles in the



**Fig. 5.** ALP activity of MC3T3-E1 pre-osteoblasts on porous and 3DP scaffolds after 14 days of culture. (A) ALP-stained scaffolds. (B) Quantitative analysis of ALP activity on the scaffolds. Scale bar, 500  $\mu\text{m}$ . Data are mean  $\pm$  SD (n = 3). \*\*\*Significantly different from porous scaffolds,  $p < 0.001$ .

porous scaffolds was due to low viscosity of the PLGA/DMSO solution, causing premature gravity precipitation during the solidification step after casting the mixture over the fused sugar mold. On the other hand, the molten PLGA/ $\beta$ -TCP mixture used for 3D-printing was far more viscous, thus allowing a more homogeneous distribution of  $\beta$ -TCP particles in the PLGA matrix after 3D-printing. This property represents an important advantage of the 3DP scaffolds in this study. We speculate that the more homogeneous distribution of  $\beta$ -TCP particles and proper surface roughness in the 3DP scaffold may have had greater impact on cellular responses, especially ALP activity, as opposed to other physical factors such as pore size and porosity.

Last but not least, it has been shown that the mechanical properties of bone tissue engineering scaffolds can modulate cellular responses (i.e. cell morphology, proliferation, migration, and differentiation)<sup>[36,37]</sup>. The compressive strength of the 3DP PLGA/ $\beta$ -TCP scaffolds was significantly higher than the porous scaffolds. This attribute was expected based on the lower porosity of the 3DP scaffolds ( $39 \pm 7\%$ ) compared with the porous scaffolds ( $85 \pm 5\%$ ). It has previously been suggested that the compressive strength of scaffolds decreases significantly with increasing scaffolds porosity<sup>[38]</sup>. Higher compressive strength of the 3DP PLGA/ $\beta$ -TCP scaffolds indicates another advantage of these scaffolds compared with porous scaffolds for bone tissue engineering.

Cell seeding efficiency of porous and 3DP PLGA/ $\beta$ -TCP scaffolds were similar after 16 h of culture. Moreover, cells had a similar proliferation rate on the two scaffold types. Besides, collagenous matrix deposition was not significantly different between the two scaffolds. This issue indicates that although the difference in the surface structure and internal architecture between the two scaffold types resulted in different cell attachment and spreading pattern, it did not have a significant effect on the proliferation and matrix deposition ability of the cells. However, it did have a significant effect on ALP activity of pre-osteoblasts on the 3DP scaffolds compared with the porous scaffolds. In addition to the homogeneous distribution of  $\beta$ -TCP particles on the 3DP scaffolds discussed earlier, higher ALP activity on the 3DP scaffolds can be attributed to more effective cell-cell contacts on these scaffolds compared with cell-cell contacts on the porous scaffolds. Cell-cell contacts have been demonstrated to be essential for inducing osteogenic differentiation. Upon cell-cell contact, cells can exchange bioactive molecules through gap junctions to enable differentiation<sup>[39,40]</sup>. Therefore, suitable surface roughness, homogeneous dispersion of

$\beta$ -TCP particles on the surface, and effective cell-cell contact on the 3DP scaffolds led to the higher ALP activity as an osteogenic marker by pre-osteoblasts in these scaffolds, as compared with the porous scaffolds fabricated by solvent casting/porogen leaching. These findings have provided further knowledge on the response of pre-osteoblasts to ordered 3DP or random porous scaffolds fabricated from the same PLGA/ $\beta$ -TCP material, which may have important implications for fine-tuning scaffold designs for bone tissue engineering.

Proliferation, matrix deposition, and ALP activity as an osteogenic marker of MC3T3-E1 pre-osteoblasts in porous or 3DP PLGA/ $\beta$ -TCP scaffolds were evaluated in this study. Our data indicate that porous and 3DP scaffolds equally support the pre-osteoblasts proliferation and matrix deposition, though only the 3DP scaffolds showed enhanced mechanical properties and ALP activity *in vitro*. This observation suggests that the 3DP PLGA/ $\beta$ -TCP scaffolds may be more favorable for *in vivo* bone formation than the porous PLGA/ $\beta$ -TCP scaffolds.

## ACKNOWLEDGEMENTS

The authors would like to thank Mr. Arie Werner (Academic Centre for Dentistry Amsterdam, Department of Dental Material Sciences, the Netherland) for assisting in scanning electron microscopy. This research received no specific grant from any funding agency.

**CONFLICT OF INTEREST.** None declared.

## REFERENCES

- Chiarello E, Cadossi M, Tedesco G, Capra P, Calamelli C, Shehu A, Giannini S. Autograft, allograft and bone substitutes in reconstructive orthopedic surgery. *Aging clinical and experimental research* 2013; **25** (Suppl 1): S101-S103.
- Yu NYC, Schindeler A, Little DG, Ruys AJ. Biodegradable poly( $\alpha$ -hydroxy acid) polymer scaffolds for bone tissue engineering. *Journal of biomedical materials research* 2010; **93**(1): 285-295.
- Felfel RM, Pooza L, Gimeno-Fabra M, Milde T, Hildebrand G, Ahmed I, Scotchford C, Sottile V, Grant DM, Liefelth K. In vitro degradation and mechanical properties of PLA-PCL copolymer unit cell scaffolds generated by two-photon polymerization. *Biomedical materials* 2016; **11**(1): 015011.
- Li Y, Liao C, Tjong SC. Synthetic biodegradable aliphatic polyester nanocomposites reinforced with nanohydroxyapatite and/or graphene oxide for bone

- tissue engineering applications. *Nanomaterials (Basel)* 2019; **9**(4): 590.
5. Arul KT, Manikandan E, Ladchumananandasivam R. Polymer-based calcium phosphate scaffolds for tissue engineering applications. In: Grumezescu AM, editor. *Nanoarchitectonics in biomedicine*. Norwich: William Andrew Publishing; 2019. p. 585-618.
  6. Ramesh N, Moratti SC, Dias GJ. Hydroxyapatite-polymer biocomposites for bone regeneration: a review of current trends. *Journal of biomedical materials research* 2018; **106**(5): 2046-2057.
  7. Yoshida T, Miyaji H, Otani K, Inoue K, Nakane K, Nishimura H, Ibara A, Shimada A, Ogawa K, Nishida E, Sugaya T, Sun L, Fugetsu B, Kawanami M. Bone augmentation using a highly porous PLGA/ $\beta$ -TCP scaffold containing fibroblast growth factor-2. *Journal of periodontal research* 2015; **50**(2): 265-273.
  8. Lee SK, Han CM, Park W, Kim IH, Joung YK, Han DK. Synergistically enhanced osteoconductivity and anti-inflammation of PLGA/ $\beta$ -TCP/Mg(OH)<sub>2</sub> composite for orthopedic applications. *Materials science and engineering: C* 2019; **94**: 65-75.
  9. Turnbull G, Clarke J, Picard F, Riches P, Jia L, Han F, Li B, Shu W. 3D bioactive composite scaffolds for bone tissue engineering. *Bioactive materials* 2018; **3**(3): 278-314.
  10. Henkel J, Woodruff MA, Epari DR, Steck R, Glatt V, Dickinson IC, Choong PF, Schuetz MA, Hutmacher DW. Bone regeneration based on tissue engineering conceptions - a 21st century perspective. *Bone research* 2013; **1**(3): 216-248.
  11. Geven MA, Grijpma DW. Additive manufacturing of composite structures for the restoration of bone tissue. *Multifunctional materials* 2019; **2**(2): 024003.
  12. Radenkovic D, Solouk A, Seifalian A. Personalized development of organs using 3D printing technology. *Medical hypotheses* 2016; **87**: 30-33.
  13. Endres S, Hiebl B, Hägele J, Beltzer C, Fuhrmann R, Jäger V, Almeida M, Costa E, Santos C, Traupe H, Jung EM, Prantl L, Jung F, Wilke A, Franke RP. Angiogenesis and healing with non-shrinking, fast degradable PLGA/CaP scaffolds in critical-sized defects in the rabbit femur with or without osteogenically induced mesenchymal stem cells. *Clinical hemorheology and microcirculation* 2011; **48**(1): 29-40.
  14. Zhang R, Ma PX. Poly( $\alpha$ -hydroxyl acids)/hydroxyapatite porous composites for bone tissue engineering. I. Preparation and morphology. *Journal of biomedical materials research* 1999; **44**(4): 446-455.
  15. Wang W, Caetano G, Ambler WS, Blaker JJ, Frade MA, Mandal P, Diver C, Bártolo P. Enhancing the hydrophilicity and cell attachment of 3D printed PCL/graphene scaffolds for bone tissue engineering. *Materials (Basel)* 2016; **9**(12): 992.
  16. Sharma K, Bullock A, Ralston D, MacNeil S. Development of a one-step approach for the reconstruction of full thickness skin defects using minced split thickness skin grafts and biodegradable synthetic scaffolds as a dermal substitute. *Burns* 2014; **40**(5): 957-965.
  17. Kroeze RJ, Knippenberg M, Helder MN. Osteogenic differentiation strategies for adipose-derived mesenchymal stem cells. *Methods in molecular biology* 2011; **702**: 233-248.
  18. Cipitria A, Lange C, Schell H, Wagermaier W, Reichert JC, Hutmacher DW, Fratzl P, Duda GN. Porous scaffold architecture guides tissue formation. *Journal of bone and mineral research* 2012; **27**(6): 1275-1288.
  19. Sicchieri LG, Crippa GE, De Oliveira PT, Beloti MM, Rosa AL. Pore size regulates cell and tissue interactions with PLGA-CaP scaffolds used for bone engineering. *Journal of tissue engineering and regenerative medicine* 2012; **6**(2): 155-162.
  20. Werner M, Kurniawan NA, Bouten CV. Cellular geometry sensing at different length scales and its implications for scaffold design. *Materials (Basel)* 2020; **13**(4): 963.
  21. Cristofaro F, Gigli M, Bloise N, Chen H, Bruni G, Munari A, Moroni L, Lotti N, Visai L. Influence of the nanofiber chemistry and orientation of biodegradable poly (butylene succinate)-based scaffolds on osteoblast differentiation for bone tissue regeneration. *Nanoscale* 2018; **10**(18):8689-8703.
  22. Phadke A, Hwang YS, Kim SH, Kim SH, Yamaguchi T, Masuda K, Varghese S. Effect of scaffold microarchitecture on osteogenic differentiation of human mesenchymal stem cells. *European cells and materials* 2013; **25**: 114-129.
  23. Deng Y, Liu X, Xu A, Wang L, Luo Z, Zheng Y, Deng F, Wei J, Tang Z, Wei S. Effect of surface roughness on osteogenesis in vitro and osseointegration in vivo of carbon fiber-reinforced polyetheretherketone-nanohydroxy-apatite composite. *International journal of nanomedicine* 2015; **10**: 1425-1447.
  24. Zan X, Sitasuwan P, Feng S, Wang Q. Effect of roughness on in situ biomineralized CaP-collagen coating on the osteogenesis of mesenchymal stem cells. *Langmuir* 2016; **32**(7): 1808-1817.
  25. Teo BKK, Wong ST, Lim CK, Kung TYS, Yap CH, Ramagopal Y, Romer LH, Yim EKF. Nanotopography modulates mechanotransduction of stem cells and induces differentiation through focal adhesion kinase. *ACS nano* 2013; **7**(6): 4785-4798.
  26. Tserepi A, Gogolides E, Bourkoula A, Kanioura A, Kokkoris G, Petrou P, Kakabakos S. Plasma nanotextured polymeric surfaces for controlling cell attachment and proliferation: a short review. *Plasma chemistry and plasma processing* 2016; **36**(1): 107-120.
  27. Huang HH, Ho CT, Lee TH, Lee TL, Liao KK, Chen FL. Effect of surface roughness of ground titanium on initial cell adhesion. *Biomolecular engineering* 2004; **21**(3-5): 93-97.
  28. Andrukhov O, Huber R, Shi B, Berner S, Rausch-Fan X, Moritz A, Spencer ND, Schedle A. Proliferation, behavior, and differentiation of osteoblasts on surfaces of different microroughness. *Dental materials* 2016; **32**(11): 1374-1384.
  29. Wei J, Igarashi T, Okumori N, Igarashi T, Maetani T, Liu B, Yoshinari M. Influence of surface wettability on

- competitive protein adsorption and initial attachment of osteoblasts. *Biomedical materials* 2009; **4**(4): 045002.
30. Itoh M, Shimazu A, Hirata I, Yoshida Y, Shintani H, Okazaki M. Characterization of CO<sub>3</sub>Ap-collagen sponges using X-ray high-resolution microtomography. *Biomaterials* 2004;**25**(13):2577-2583.
31. Mygind T, Stiehler M, Baatrup A, Li H, Zou X, Flyvbjerg A, Kassem M, Bünger C. Mesenchymal stem cell ingrowth and differentiation on coralline hydroxyapatite scaffolds. *Biomaterials* 2007;**28**(6):1036-1047.
32. Kasten P, Beyen I, Niemeyer P, Luginbühl R, Bohner M, Richter W. Porosity and pore size of  $\beta$ -tricalcium phosphate scaffold can influence protein production and osteogenic differentiation of human mesenchymal stem cells: an in vitro and in vivo study. *Acta biomaterialia* 2008;**4**(6):1904-1915.
33. Jeong J, Kim JH, Shim JH, Hwang NS, Heo CY. Bioactive calcium phosphate materials and applications in bone regeneration. *Biomaterials research* 2019; **23**: 4.
34. Tsukanaka M, Fujibayashi S, Otsuki B, Takemoto M, Matsuda S. Osteoinductive potential of highly purified porous  $\beta$ -TCP in mice. *Journal of materials science: materials in medicine* 2015; **26**(3): 132.
35. Cheng L, Ye F, Yang R, Lu X, Shi Y, Li L, Fan H, Bu H. Osteoinduction of hydroxyapatite/ $\beta$ -tricalcium phosphate bioceramics in mice with a fractured fibula. *Acta biomaterialia* 2010; **6**(4): 1569-1574.
36. Chen G, Dong C, Yang L, Lv Y. 3D scaffolds with different stiffness but the same microstructure for bone tissue engineering. *ACS applied materials and interfaces* 2015; **7**(29): 15790-15802.
37. Yeung T, Georges PC, Flanagan LA, Marg B, Ortiz M, Funaki M, Zahir N, Ming W, Weaver V, Janmey PA. Effects of substrate stiffness on cell morphology, cytoskeletal structure, and adhesion. *Cell motility and cytoskeleton* 2005; **60**(1): 24-34.
38. Zhao H, Li L, Ding S, Liu C, Ai J. Effect of porous structure and pore size on mechanical strength of 3D-printed comby scaffolds. *Materials letters* 2018; **223**: 21-24.
39. Fukuda N, Kanazawa M, Tsuru K, Tsuchiya A, Sunarso, Toita R, Mori Y, Nakashima Y, Ishikawa K. Synergistic effect of surface phosphorylation and micro-roughness on enhanced osseointegration ability of poly(ether ether ketone) in the rabbit tibia. *Scientific reports* 2018; **8**: 16887.
40. Hashida Y, Nakahama K, Shimizu K, Akiyama M, Harada K, Morita I. Communication-dependent mineralization of osteoblasts via gap junctions. *Bone* 2014; **61**: 19-26.