

Identification of a Novel *KCNQ1* Frameshift Mutation and Review of the Literature among Iranian Long QT Families

Azam Amirian¹, Zahra Zafari^{1,2}, Morteza Karimipoor¹, Alireza Kordafshari¹,
Mohammad Dalili³, Siamak Saber³, Amir Farjam Fazelifar³ and Sirous Zeinali^{1,4*}

¹Department of Molecular Medicine, Biotechnology Research Center, Pasteur Institute of Iran, Tehran, Iran;

²Department of Biology, Shahed University, Tehran, Iran; ³Cardiac Electrophysiology Research Center, Rajaie Cardiovascular Medical, and Research Center, Iran University of Medical Sciences, Tehran, Iran; ⁴Medical Genetics Laboratory, Kawsar Human Genetics Research Center, No. 41 Majlesi St., Vali Asr St., Tehran, Iran

Received 11 August 2018; revised 19 August 2018; accepted 25 August 2018

ABSTRACT

Background: Long QT syndrome (LQTS) is characterized by the prolongation of QT interval, which results in syncope and sudden cardiac death in young people. *KCNQ1* is the most common gene responsible for this syndrome. **Methods:** Molecular investigation was performed by DNA Sanger sequencing in Iranian families with a history of syncope. *In silico* examinations were performed for predicting the pathogenicity of the novel variant. **Results:** A novel homozygous *KCNQ1* frameshift mutation, c.1426_1429delATGC (M476Pfs*4), was identified, and then the current literatures of five patients were reviewed regarding the LQTS. **Conclusion:** The novel frameshift mutation has been reported for the first time among the Iranian population. Our finding along with the case series study of LQTS patients illustrates the importance of genetic and case series in precise detection of the frequency of LQTS carriers. **DOI: 10.29252/ibj.23.3.228**

Keywords: Jervell-Lange-Nielsen syndrome, *KCNQ1*, Long QT syndrome, Romano-Ward syndrome

Corresponding Authors: Sirous Zeinali

Department of Molecular Medicine, Biotechnology Research Center, Pasteur Institute of Iran, Tehran, P. O. Box: 1316943551, Iran;
Tel.: (+98-21) 66969293; E-mail: zeinalipasteur@yahoo.com

INTRODUCTION

Long-QT syndrome (LQTS) is characterized by prolonged QT interval on the electrocardiograms (ECG), syncope, and cardiac arrest^[1,2]. It has been reported that mutations in 16 genes can result in inherited LQTS^[3]. There are two main types of inherited LQTS: the autosomal dominant termed Romano-Ward syndrome (RWS) and the autosomal recessive type with less recurrence defined as Jervell-Lange Nielsen Syndrome (JLNS)^[3]. Mutations in *KCNQ1* gene may create both the RWS and JLNS disorders.

JLNS is a condition in which QTc prolongation accompanying with congenital two-sided deafness

occurs due to compound heterozygous or homozygous mutations in *KCNQ1* and/or *KCNE1* genes^[4]. RWS is recognized as the aggregation of symptoms such as syncopal attacks and QT interval alteration in ECG without congenital deafness^[5]. Although RWS is mostly inherited in an autosomal dominant pattern^[6], autosomal recessive inheritance is associated with homozygosity^[7]. In addition, the association of JLNS with compound heterozygosity^[8] has been observed in some cases; the fact indicates that the pattern of inheritance for this disease could be more intricate.

In this study, we present a novel homozygous frameshift mutation of *KCNQ1* gene and review recent literatures on novel frameshift and recessive *KCNQ1* mutations of Iranian families.

MATERIALS AND METHODS

Clinical evaluation

Six unrelated LQTS patients (patients A-F) were referred to Emergency Department of Rajaie Cardiovascular, Medical and Research Center (Tehran, Iran) for further clinical evaluations and molecular testing.

Genetic study

Informed consent and the study approval by the Ethics Committee of Pasteur Institute of Iran and Rajaie Cardiovascular, Medical and Research Center (adopted from the 1975 Helsinki Declaration) were obtained. Blood samples along with the ECG were collected from the patient and family members. Using the standard salting-out protocol, genomic DNA was extracted from the peripheral blood samples. Primer design was performed by Gene Runner and Primer3 online software for coding exons and exon-intron boundaries and also untranslated regions of *KCNQ1* (NM_000218). Primers for *KCNH2* (NM_000238) and *SCN5A* (NM_198056.2) were designed as well (Table 1). By PCR, exons of the genes were amplified, and by Sanger sequencing technique, the amplicons were sequenced. Sanger sequencing results were compared with the RefSeq genomic accession numbers, and the variants were evaluated by Mutation Database. For predicting the functional impact of the variant on the

protein, MutationTaster^[9], HSF^[10], Mutation Assessor^[11], SIFT^[12], PolyPhen-2^[13], and FATHMM^[14] were used.

RESULTS

Patient A was a five-year-old girl with a history of syncope and seizure disorders. She was offspring of a consanguineous marriage and suffered from congenital sensorineural deafness. She had experienced fainting around the age of 2.5. There was no family history of convulsions, but a sudden cardiac death happened in proband's sibling at six months of age (4:2 in Fig. 1). One stillbirth was reported by her mother in the previous pregnancy. Her first ECG demonstrated normal sinus rhythm with the prolonged QT interval of over 500 milliseconds (ms), as depicted in Figure. 2, while her parents showed normal ECG.

Data of Sanger sequencing demonstrated a novel homozygous frameshift mutation, c.1426_1429 delATGC (M476Pfs*4; ClinVar accession number: SCV000678249.1), in the *KCNQ1* gene (Fig. 1A). The mutation was confirmed in the father of proband in heterozygous form, but the DNA sample of her mother was not available. The variant was considered as a frameshift mutation according to MutationTaster software. All the aforementioned predictive tools predicted it as a damaging and disease-causing variant.

Table 1. Primers of *KCNQ1*, *KCNH2*, and *SCN5A* genes for coding regions

Gene/exon	Primer sequence	Gene/exon	Primer sequence
<i>KCNQ1</i> /1	F: AGCGGGATAGATGACACGAG R: CTTCTGAGAGCTGGTGTGG	<i>SCN5A</i> /2	F: CCTCTCTGCAAATGGTGTCC R: GGAAATGAGTCACTGGTGATCT
<i>KCNQ1</i> /2	F: TACCAGCTAATGGATGACTGG R: GGTGACTCTGTTCCTGGGTGA	<i>SCN5A</i> /3	F: CTGACCTGCCAAATGTGCTG R: CCTAAGACAAATGCATGGTCAT
<i>KCNQ1</i> /3	F: TGGACATGAGCTGAAGCTGC R: ACACCATGATCAGCGTCTGAG	<i>SCN5A</i> /4	F: TGCCTATTAGGTGTCATGGAG R: CTTCTGGCATTAAATTTGAGTTG
<i>KCNQ1</i> /4	F: GTCTCTCCGTTTAGATGCTGC R: GGAATCTGGAGGTACCTGGC	<i>SCN5A</i> /5	F: TCGTTAGCCAGATGTTTAGAGC R: CAGTCCACATGCAGCTCTGC
<i>KCNQ1</i> /5	F: CTGTCGGGATGGACATATACC R: CCACACTAGGACAGCTTGAGAT	<i>SCN5A</i> /6	F: TCAGTTATCCCAGGTAAGATGC R: GGCTATTGGCAGTGGACATG
<i>KCNQ1</i> /6	F: ACCGGAGTTGTGAGGAGTGG R: CCAAAGGACTCAACACTGAGC	<i>SCN5A</i> /7	F: GAAATCAGGACAGAATCTCAGC R: AGGACAGACGGGTAGCAGAC
<i>KCNQ1</i> /7	F: TTACATGTGCTGGTGGGACA R: CTGGAGTATAGCACCTTCTAGAAG	<i>SCN5A</i> /8	F: TCCCGTGTCTTCTGAGAGCA R: GCACAGAGGAGACAGCTTCT
<i>KCNQ1</i> /8	F: CTTCCAGCACTGACCATACTT R: GCATTGGAGCCTGTCTTCTCTC	<i>SCN5A</i> /9	F: ACAGCACGAACAAAGTCAAG R: AGGATGCTCTCTGCTCTGTGA
<i>KCNQ1</i> /9	F: CCACCTTTGCAAGTCTCTCC R: CGATGCTAGGTTCTGCCATC	<i>SCN5A</i> /10	F: CTCTGCAGGTCAGTACATGTCC R: GTGAATGTGGTATCGCTGAGTA

Gene/exon	Primer sequence	Gene/exon	Primer sequence
<i>KCNQ1</i> /10	F: CTGTGTGAAGACACTGGAGCTG R: GGTCTCTGACAACGAGGTATGAA	<i>SCN5A</i> /11	F: CTGTCTGAGTTTATCTCCATGATG R: CCATAAGAGTGAGGGTCCATT
<i>KCNQ1</i> /11	F: TGATTGTCAGTGCTGGAGCT R: GTGCTATCTACTCGCCTAGTGC	<i>SCN5A</i> /12	F: CAAGCCCAGTTAAGTTTCAGG R: CTCTAGGTGCATAAACTTACA
<i>KCNQ1</i> /12	F: GGACATGGCCTAAGTATCTCC R: CCTATCTGAGACCTGACAGTGC	<i>SCN5A</i> /13	F: TGTCCCATCAAGACCTTCATC R: CTGTTCTGTGTAGCCTTGCC
<i>KCNQ1</i> /13	F: CGGTGAGTAGACAGGAAGCTG R: GAGTTCTTGCCTCTCAACCAC	<i>SCN5A</i> /14	F: TGTCTGATAATCTCTCCTGTCC R: GCTGAGAAATGTAGATTTGGAGT
<i>KCNQ1</i> /14	F: AACTAGCTCCGTGTGTACAGG R: TGCATGACATGAAATGAAAGC	<i>SCN5A</i> /15	F: TGCCTGGTATGCTTGGTGAG 5'-GTCATGCCTTCACCCAACAG
<i>KCNQ1</i> /15	F: TCAGAGGTGGAGAGCGTGGA R: CGTAGTCTGCTTTGTGCTCTG	<i>SCN5A</i> /16	F: GAAACAGTAGTGGGTGCTCTGG R: CACCAATGAACACACCAATCTAT
<i>KCNQ1</i> /16	F: AGACATAGGGTGCACACGTG R: CGTCTCAGGTCTGAGTTGTTAC	<i>SCN5A</i> /17	F: AAGCCTCGGAGCTGTTTGTC R: CTCCCTTCCTAACTCAGTCCAG
<i>KCNH2</i> /1	F: GCCACCCGAAGCCTAGTGC R: GGAAACTCAGCTCAGGCTTTTGG	<i>SCN5A</i> /18	F: GAGGAGTCTTCAGTGAGATGGAG R: CTCTGATGCAGGACTAACCCA
<i>KCNH2</i> /2	F: CTGTGTGAGTGGAGAATGTGG R: GGAGTTGCTAGGCTGTGGGT	<i>SCN5A</i> /19	F: AGCCTTAGACTCCAGCAGACC R: TCCATCTGCCTGACGTGTCT
<i>KCNH2</i> /3	F: GCAGAAGAAAGGATCATAGCC R: CCAGAATCACAGGTCCTTGG	<i>SCN5A</i> /20	F: CCATCCTCCTCAAAGAGTGC R: GGAACAGCTCACAACCTCTCAA
<i>KCNH2</i> /4	F: TGAAGTGTCACTTCAGATATGG R: GTCCATTATCCCATATTACATT	<i>SCN5A</i> /21	F: CTCATCTAGTTCCTGTTTCTGCT R: CGTAAGTCTGAGTGACCCAGG
<i>KCNH2</i> /5	F: TGGCTGCTTCCTTAGAGTGG R: GCAATCTATTCCAGAGCTGC	<i>SCN5A</i> /22	F: CCAGAAGCCAGGATACTCTTG R: AGGCTAGGCAGCTGTGAGAA
<i>KCNH2</i> /6	F: GTGGGCATTCTGATGGAAGCT R: CCTATGCTCCTTCTCTCCACA	<i>SCN5A</i> /23	F: GGAAACCAGATGTTCTGAAGC R: CAGTTCTAGAACCAGATACCATGT
<i>KCNH2</i> /7	F: AGGAGGAGGGTCTAGGAAGTC R: TCGACGCTGAGACTGAGACA	<i>SCN5A</i> /24	F: CTGACCACCCAGGCATTAG R: GTCACCTGGAGTTCAGCCTC
<i>KCNH2</i> /8	F: TGGAGCGCAGATGTACAAGG R: CACAGTCAGTAGTAAGGACCCTG	<i>SCN5A</i> /25	F: TAGTGACCTTCCTCTAGATACACC R: CCTGTAAGAACGTAAGAAGGG
<i>KCNH2</i> /9	F: CTGATGCTTCCGAGATCTCC R: GAGGAAGAAATGCTAGCCTGG	<i>SCN5A</i> /26	F: GGTGGATACTGGATTTGCAG R: AGGTATGATAAGGATGTAGCATC
<i>KCNH2</i> /10	F: TGCAGTGATTGGCTAAGAGG R: TGGTATCATAGAGCAGCCTACA	<i>SCN5A</i> /27	F: GGACAGCCAGTGGCTTTAGC R: CTGAATGCCATGTACAACCCT
<i>KCNH2</i> /11	F: TCAAATGGTATCATAGAGCAGC R: CCTGAAGCACCATTGCCAGT	<i>SCN5A</i> /28.1	F: GCTCCTTGCCATATAGAGACC R: CATCGTGGTCAACATGTACATT
<i>KCNH2</i> /12,13	F: CAAGATAGCAGAAGAAGCGAC R: AGCTGGATCCCCTTCTTCCA	<i>SCN5A</i> /28.2	F: GACATGTTCAACTTCCAGACCT R: GGTTATCCAGAGAGCCTTCC
<i>KCNH2</i> /14	F: GGTGTTGTCTGGTAGAGGGAG R: GTGGTCTCCAAGAACTGACTGA	<i>SCN5A</i> /28.3	F: CCCAACCAGATAAGCCTCAT R: GGAGTAAGAAATGGGCCTCA
<i>KCNH2</i> /15	F: GCTCCTGCTCTCAGAGAATGC R: GGAACCTCGAAAGCACAGCTC	-	-

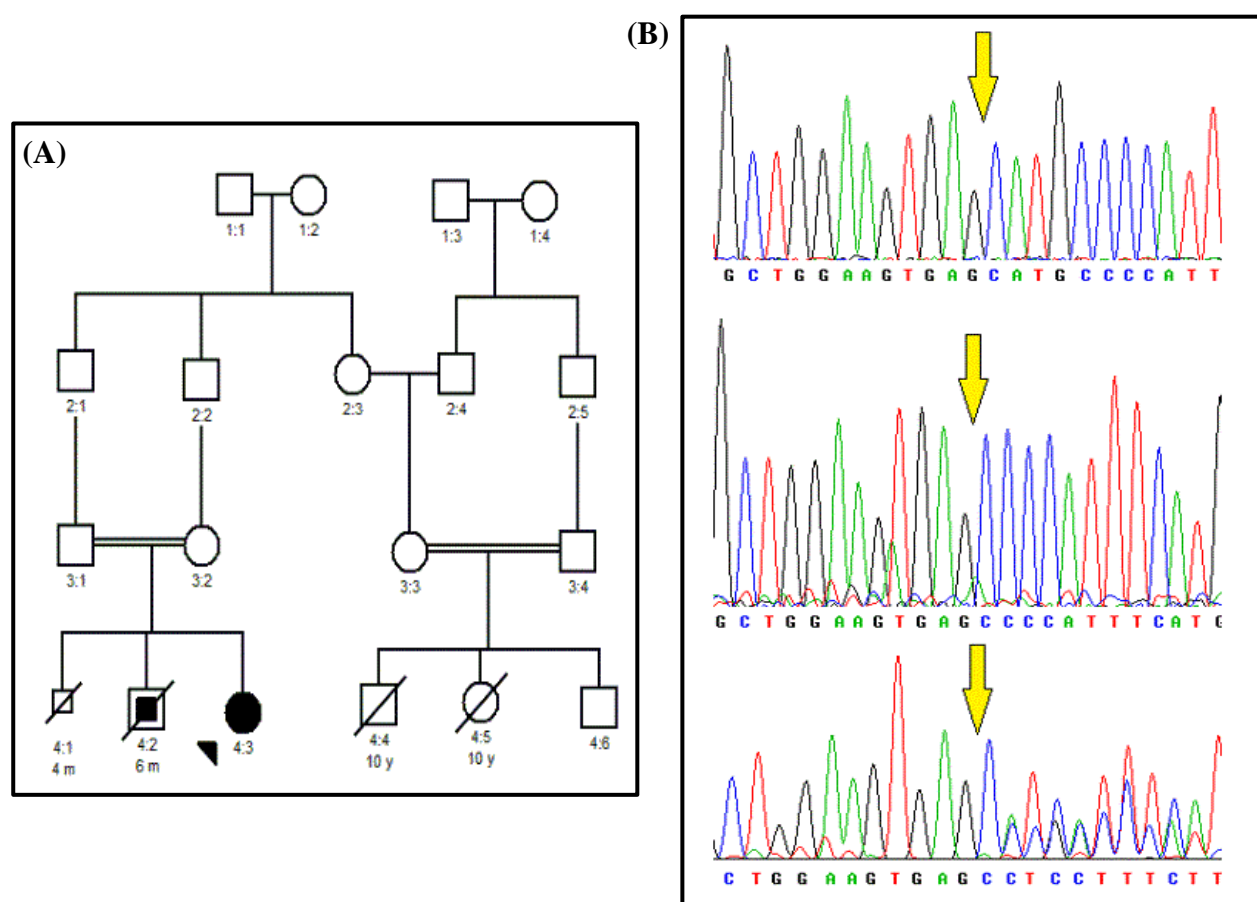


Fig 1. Pedigree and mutation confirmation. (A) Family pedigree for the patient A; (B) DNA Sanger sequencing confirmation of c.1426_1429delATGC (M476Pfs*4) mutation (arrows) in the index case with homozygote condition (middle), unaffected heterozygote father (lower), and a normal control sequence (upper).

This mutation introduces three novel amino acids after codon 475 (methionine 476, as the first affected amino

acid, was changed to proline) and premature stop codon at 480 that resulted in a truncated protein.

Patients B and C were referred to the clinic due to syncope and a prolonged QTs interval of >600 and 560 ms, respectively. Except for hearing defect, physical and neurological examinations were totally normal, and also there was no electrolyte imbalance. Sanger sequencing of the *KCNQ1* gene for both cases showed a homozygous frameshift mutation, c.733_734delGG (p.G245Rfs*39), in the exon 5. This frameshift results in a premature stop codon and develops a truncated protein. Examination of the parents of two patients showed heterozygosity for this mutation. In our previous study^[15], using STR markers, we demonstrated this frameshift mutation in two obviously unrelated families with the same origin, which may represent a founding effect.

Patients D and E were presented by the recurrent episodes of syncope and a prolonged QTs interval of >550 and 600 ms, respectively. Analysis of the DNA sequence in patient D revealed a homozygous missense

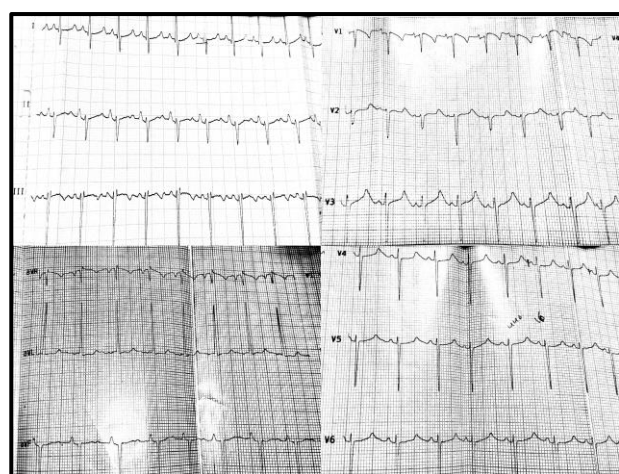


Fig 2. The electrocardiogram (ECG) of the index case. The 12-lead ECG of the patient A at five years of age (QTc over 500 ms in lead II; heart rate, 72 beat/min; with a paper speed of 25 mm/s and 10 mm/mV at 20 Hz).

mutation of c.1691A>G in the *KCNQ1* gene. The same mutation was also identified in patient E by next-generation sequencing. This variant has not previously been reported in Exome Aggregation Consortium (ExAC) or 1000 Genome databases. Co-segregation analysis confirmed the association of LQTS with the mentioned variant, and a same haplotype was detected in the two families. Using *in silico* analysis, we identified the p.D564G variant as a deleterious variant.

Patient F had a background of recurrent syncope, which the first episode occurred at the age of 18 months. Resting 12-lead ECG showed noticeably a prolonged QTc interval of >580 ms. Echocardiography detected a structurally normal heart, and the ECG of her parents was normal. Sanger sequencing of the *KCNQ1* gene exhibited a homozygous mutation, c.1532_1534delG (p. A512Pfs*81), that led to a premature stop codon. Her parents were heterozygous for this mutation. This variant has not been reported in the literature and databases before.

DISCUSSION

In the present research, the mutation analysis of the *KCNQ1*, *KCNH2*, and *SCN5A* genes were performed in a patient among a cohort of 30 unrelated Iranian LQTS families. The sequence analysis of the index patient demonstrated the absence of mutation in the *SCN5A* and *KCNH2* genes but showed a novel homozygous mutation, c.1426_1429delATGC (M476Pfs*4), in *KCNQ1* gene. Five patients screened previously were found to have a missense mutation in two RWS families^[16] and two frameshift mutations in three JLNS families^[17,18].

The novel mutation was detected neither in ExAC nor in 1000 Genome; additionally, it has not been reported in any disease database such as HGMD and LOVD. In the index case, the 4-bp deletion was located at positions 1426 to 1429 in exon 11 of *KCNQ1* gene, which led to amino acid sequence alteration and was accordingly considered as a frameshift variant.

It has been shown that frameshift mutations leading to truncated proteins are responsible for the majority of JLNS cases^[19,20]. Wei *et al.*^[21] have reported a one-nucleotide deletion in the position 1188 of *KCNQ1* gene, which causes a frameshift and leads to a premature stop codon and consequently, results in a 259-amino-acid deletion in the C-terminal. Another study has demonstrated that a frameshift may lead to the loss of function of the potassium channel, due to a single nucleotide insertion onto the position 1149 of this gene^[22]. In LQTS patients, frameshift mutation has

been predicted to be a pathogenic mutation with an estimated predicted value of 99%^[23]. In concordance with the genetic study result, our patient showed the clinical features of seizure, recurrent episodes of syncope, and the family history of serious heart events such as sudden cardiac death in the sibling of the proband who died at six months of age (4:2 in Fig. 1). Likewise, a congenital sensorineural deafness was observed in the proband in agreement with most previous reports in JLNS patients^[24,25].

The probands B, C, and F were categorized as patients of JLNS, the recessive form of LQTS. A frameshift mutation (p. A512Pfs*81) was found in patient F. In B and C non-consanguineous families, the frameshift mutation, c.733_734delGG, happened in the C-loop between the transmembrane domains S4-S5 of the protein. The C-loop domains have a significant role in changing the potassium channel's function; therefore, mutations in the residues of this region may impair the voltage-dependent activation of the channel, hence leading to increased risk of lethal cardiac events^[26]. Functional assay showed that mutations in the C-loop of *KCNQ1* gene impress the adrenergic regulation of channel, either in the absence or in the presence of wild-type subunits^[27,28].

To confirm whether the novel missense variant of c.1691A>G (p.D564G) in cases D and E is pathogenic, further analysis was conducted. *In silico* investigations by the predictive software indicated that the substitution of aspartic acid with glycine at codon 564 may be a disease-causing mutation. SIFT, Polyphen-2, MutationTaster, and FATHMM classified the p.A564G as a damaging variant. The conservation scores predicted by PhyloP, PhastCons, and GERP++ were 4.32, 1, and 4.02, respectively. These analyses also revealed that aspartic acid 564 is located in the C-terminal domain of *KCNQ1* channel, in a highly conserved α -helix region. In addition, Mutation Mapper showed the aspartic acid at position 564 was conserved among 100 different species. Consequently, according to the American College of Medical Genetics and Genomics guidelines (ACMG), the recessive variant was categorized as a possible pathogenic mutation^[29].

This is the first report of a novel homozygous frameshift mutation with JLNS. Based on ACMG, this mutation is likely to abolish channel function, severely. Identification of six JLNS and RWS index cases in a period of 24 months in a cardiogenetic clinic in Tehran suggests the high prevalence of LQTS. This high prevalence necessitates a broader surveillance in the country and reveals the importance of genetic and case series studies in precise detection of LQTS carriers' frequency.

ACKNOWLEDGMENTS

This work was supported by Pasteur Institute of Iran (grant number 824 partly and the Ph.D. grant from Education Office, Pasteur Institute of Iran). We acknowledge the efforts of referring clinicians and are indebted to the patients and family members for their participation.

CONFLICT OF INTEREST. None declared.

REFERENCES

- Alders M, Christiaans I. Long QT syndrome. 2015. Retrieved from: <https://www.ncbi.nlm.nih.gov/books/NBK1129/>
- Moss AJ, Shimizu W, Wilde AA, Towbin JA, Zareba W, Robinson JL, Qi M, Vincent GM, Ackerman MJ, Kaufman ES, Hofman N, Seth R, Kamakura S, Miyamoto Y, Goldenberg I, Andrews ML, McNitt S. Clinical aspects of type-1 long-QT syndrome by location, coding type, and biophysical function of mutations involving the KCNQ1 gene. *Circulation* 2007; **115**(19): 2481-2489.
- Morita H, Wu J, Zipes DP. The QT syndromes: long and short. *Lancet* 2008; **372**(9640): 750-63.
- Schwartz PJ, Stramba-Badiale M, Crotti L, Pedrazzini M, Besana A, Bosi G, Gabbarini F, Goulene K, Insolia R, Mannarino S, Mosca F, Nespoli L, Rimini A, Rosati E, Salice P, Spazzolini C. Prevalence of the congenital long-QT syndrome. *Circulation* 2009; **120**(18): 1761-1767.
- Romano C, Gemme G, Pongiglione R. Rare cardiac arrhythmias of the pediatric age. II: Syncopal attacks due to paroxysmal ventricular fibrillation (Presentation of 1st case in Italian pediatric literature). *Clinical pediatrics (Bologna)* 1963; **45**: 656-683.
- Ward OC. A new familial cardiac syndrome in children. *Journal of Irish medical association* 1964; **54**: 10310-6.
- Priori SG, Schwartz PJ, Napolitano C, Bianchi L, Dennis A, De Fusco M, Brown AM, Casari G. A recessive variant of the Romano-Ward long-QT syndrome? *Circulation* 1998; **97**(24): 2420-2425.
- Larsen LA, Fosdal I, Andersen PS, Kanters JK, Vuust J, Wettrell G, Christiansen M. Recessive Romano-Ward syndrome associated with compound heterozygosity for two mutations in the KVLQT1 gene. *European journal of human genetics* 1999; **7**(6): 724-728.
- Schwarz JM, Cooper DN, Schuelke M, Seelow D. MutationTaster2: mutation prediction for the deep-sequencing age. *Nature methods* 2014; **11**(4): 361-362.
- Desmet FO, Hamroun D, Lalande M, Collod-Bérout G, Claustres M, Bérout C. Human splicing finder: an online bioinformatics tool to predict splicing signals. *Nucleic acids research* 2009; **37**(9): e67.
- Reva B, Antipin Y, Sander C. Predicting the functional impact of protein mutations: application to cancer genomics. *Nucleic acids research* 2011; **39**(17): e118.
- Kumar P, Henikoff S, Ng PC. Predicting the effects of coding non-synonymous variants on protein function using the SIFT algorithm. *Nature protocols* 2009; **4**: 1073-1081.
- Adzhubei I, Jordan DM, Sunyaev SR. Predicting functional effect of human missense mutations using PolyPhen-2. *Current protocols in human genetics* 2013; **7**: Unit 7. doi: 10.1002/0471142905.hg0720s76.
- Shihab HA, Gough J, Cooper DN, Stenson PD, Barker GL, Edwards KJ, Day IN, Gaunt TR. Predicting the functional, molecular, and phenotypic consequences of amino acid substitutions using hidden Markov models. *Human mutation* 2013; **34**(1): 57-65.
- Amirian A, Zafari Z, Dalili M, Saber S, Karimipour M, Dabbagh Bagheri S, Fazelifar AF, Zeinali S. Detection of a new KCNQ 1 frameshift mutation associated with Jervell and Lange-Nielsen syndrome in 2 Iranian families. *Journal of arrhythmia* 2018; **34**(3): 286-290.
- Zafari Z, Dalili M, Zeinali S, Saber S, Fazelifar AF, Akbari MT. Identification and characterization of a novel recessive KCNQ1 mutation associated with Romano-Ward Long-QT syndrome in two Iranian families. *Journal of electrocardiology* 2017; **50**(6): 912-918.
- Amirian A, Dalili SM, Zafari Z, Saber S, Karimipour M, Akbari V, Fazelifar A, Zeinali S. Novel frameshift mutation in the KCNQ1 gene responsible for Jervell and Lange-Nielsen syndrome. *Iranian journal of basic medical sciences* 2018; **21**(1): 108-111.
- Amirian A, Zafari Z, Dalili M, Saber S, Karimipour M, Dabbagh Bagheri S, Fazelifar AF, Zeinali S. Detection of a new KCNQ 1 frameshift mutation associated with Jervell and Lange-Nielsen syndrome in 2 Iranian families. *Journal of arrhythmia* 2018; **34**(3): 286-290.
- Tester DJ, Will ML, Haglund CM, Ackerman MJ. Compendium of cardiac channel mutations in 541 consecutive unrelated patients referred for long QT syndrome genetic testing. *Heart rhythm* 2005; **2**(5): 507-517.
- Tyson J, Tranebjærg L, McEntagart M, Larsen L, Christiansen M, Whiteford M, Bathen J, Aslaksen B, Sørland S, Lund O, Pembrey ME, Malcolm S, Bitner-Glindzicz M. Mutational spectrum in the cardioauditory syndrome of Jervell and Lange-Nielsen. *Human genetics* 2000; **107**(5): 499-503.
- Wei J, Fish FA, Myerburg RJ, Roden DM, George Jr AL. Novel KCNQ1 mutations associated with recessive and dominant congenital long QT syndromes: evidence for variable hearing phenotype associated with R518X. *Human mutation* 2000; **15**(4): 387-388.
- Wang RR, Li N, Zhang YH, Wang LL, Teng SY, Pu JL. Novel compound heterozygous mutations T2C and 1149insT in the KCNQ1 gene cause Jervell and Lange-Nielsen syndrome. *International journal of molecular medicine* 2011; **28**(1): 41-46.
- Giudicessi JR, Ackerman MJ. Prevalence and potential genetic determinants of sensorineural deafness in KCNQ1 homozygosity and compound heterozygosity.

- Circulation: genomic and precision medicine* 2013; **6**(2): 193-200.
24. Al-Aama JY, Al-Ghamdi S, Bdier A, AlQarawi A, Jiman O, Al-Aama N, Al-Aata J, Wilde AA, Bhuiyan Z. Genotype-phenotype analysis of Jervell and Lange-Nielsen syndrome in six families from Saudi Arabia. *Clinical genetics* 2015; **87**(1): 74-79.
 25. Kapa S, Tester DJ, Salisbury BA, Harris-Kerr C, Pungliya MS, Alders M, Wilde AA, Ackerman MJ. Genetic testing for long-QT syndrome: distinguishing pathogenic mutations from benign variants. *Circulation* 2009; **120**(18): 1752-1760.
 26. Isacoff EY, Jan YN, Jan LY. Putative receptor for the cytoplasmic inactivation gate in the Shaker K⁺ channel. *Nature* 1991; **353**(6339): 86-90.
 27. Matavel A, Medei E, Lopes CM. PKA and PKC partially rescue long QT type 1 phenotype by restoring channel-PIP2 interactions. *Channels (Austin)* 2010; **4**(1): 3-11.
 28. Barsheshet A, Goldenberg I, Jin O, Moss AJ, Jons C, Shimizu W, Wilde AA, McNitt S, Peterson DR, Zareba W, Robinson JL, Ackerman MJ, Cypress M, Gray DA, Hofman N, Kanter JK, Kaufman ES, Platonov PG, Qi M, Towbin JA, Vincent GM, Lopes CM. Mutations in cytoplasmic loops of the KCNQ1 channel and the risk of life-threatening events: implications for mutation-specific response to beta-blocker therapy in type-1 long QT syndrome. *Circulation* 2012; **125**(16): 1988-1896.
 29. Richards S, Aziz N, Bale S, Bick D, Das S, Gastier-Foster J, Grody WW, Hegde M, Lyon E, Spector E, Voelkerding K, Rehm HL, ACMG Laboratory Quality Assurance Committee. Standards and guidelines for the interpretation of sequence variants: a joint consensus recommendation of the American College of Medical Genetics and Genomics and the Association for Molecular Pathology. *Genetics in medicine* 2015; **17**(5):405-424.